

vivere

NORTH GUILDFORD



vivere è
costruire una
casa dei ricordi

TO LIVE IS TO BUILD
A HOME OF MEMORIES

/vi.ve.re/

NOUN – TO LIVE

Vivere by Solterra embodies a life of enrichment and authenticity. Drawing inspiration from the heart of Italian culture, it celebrates a lifestyle where simplicity and quality elevate everyday living to something extraordinary.

A home at Vivere offers you a sanctuary of your own, with a list of thoughtfully curated amenities tailored for your ease and enjoyment, creating a haven you'll be reluctant to leave, and will be able to enjoy for years to come.



North Guildford's First Residential High-Rise

NESTLED IN NORTH GUILDFORD, VIVERE WILL BE THE FIRST HIGH-RISE TO EMERGE HERE.

This urban sanctuary will offer 175 residences in a landmark 20-storey high-rise at 152 Street and Guildford Drive. Located to the entrance of North Guildford, views will be 360° that will span the Fraser River, coast mountains, Lower Mainland's urban cityscape, North Shore mountains and the Salish Sea.

Unparalleled Connectivity

VIVERE'S PRIME LOCATION NEAR HIGHWAY 1 PROVIDES SEAMLESS ACCESS TO BOTH THE NATURAL BEAUTY OF THE FRASER RIVER AND IN SURROUNDING COMMUNITIES.

As the first residential high-rise coming to Guildford, Vivere is setting a new benchmark in this already-exceptional neighbourhood. Residents at Vivere will live conveniently close to shopping centers, diverse dining options, entertainment venues, and highly esteemed educational institutions like SFU and UBC, along with the new addition of a skytrain station



34

MINUTES
TO DOWNTOWN

33

MINUTES
TO YVR

DINING

- 1. Taqueria Alebrijes
- 2. Chuihong
- 3. Happy Jack's Café
- 4. Desi Tadka
- 5. Mauna Sushi
- 6. Shahrayar Grill House
- 7. Parm's Pizza Factory
- 8. Steve's Poke Bar
- 9. Sabai Thai Restaurant
- 10. Pho Tau Bay

ESSENTIALS

- 1. Guildford Town Centre
- 2. Hannam Supermarket
- 3. Save-On-Foods & Pharmacy
- 4. Buy-Low Foods
- 5. Real Canadian Superstore
- 6. T&T Supermarket
- 7. Nesters Market
- 8. Shoppers Drug Mart
- 9. London Drugs
- 10. RBC Royal Bank
- 11. BMO Bank of Montreal
- 12. CIBC
- 13. Surrey Memorial Hospital

RECREATION

- 1. Holly Park
- 2. Guildford Heights Park
- 3. Serpentine Headwaters Park
- 4. Hjorth Road Park
- 5. Northview Park
- 6. Hawthorne Rotary Park
- 7. Invergarry Park
- 8. Guildford Recreation Centre
- 9. Guildford Library
- 10. Fraser Heights Recreation Centre

EDUCATION

- 1. Harold Bishop Elementary
- 2. Holly Elementary
- 3. Riverdale Elementary School
- 4. Johnston Heights Secondary School
- 5. Guildford Park Secondary School
- 6. Fraser Heights Secondary School
- 7. Simon Fraser University (Surrey Campus)
- 8. Kwantlen Polytechnic University (Civic Plaza Campus)

NORTH GUILDFORD

Live Centrally

A location that fits your lifestyle, experience a community that perfectly combines urban vibrancy with peaceful nature.



18

MINUTES
TO COQUITLAM



11



22

MINUTES
TO LANGLEY



33

MINUTES
TO USA BORDER
CRESCENT BEACH

King George Blvd

140 St

FUTURE
GREEN TIMBERS
STATION

Fraser Hwy

88 Ave

100 Ave

104 Ave

108 Ave

108 Ave

112 Ave

148 St

152 St

156 St

160 St

156 St

160 St

20 MINUTE WALK

10 MINUTE WALK

SFPR





12



13

Insieme: The Art of Togetherness

**26 COLLECTIVE SPACES DESIGNED TO
INSPIRE YOUR DAILY LIVING**

In today's world digital connections often replace face-to-face interactions, Vivere rekindles the Italian tradition of togetherness offering an array of indoor and outdoor amenities that act as an extension of each home.

Spanning over 11,400 square feet across Vivere's first two levels, these amenities promote authentic living whilst emphasizing health and wellness.



Building Amenities

A PLACE TO THRIVE

Step into the vast ground-level terrace, Vivere's verdant oasis, where nature meets community. Envision leisurely afternoons on the putting green, laughter-filled moments at the children's play area, and tranquil strolls through lush community gardens. Your four-legged companions will revel in their own dedicated dog park.

The sense of community thrives in the thoughtfully curated outdoor kitchens and dining spaces, where residents can enjoy al fresco dining and culinary delights beneath the sky's expanse.

CONVENIENCE

Concierge

At your service, our concierge desk offers personalized attention for all your needs and queries, adding a touch of luxury to your daily life.

Parcel Room

Experience the convenience of our secure parcel room, ensuring your deliveries are safe until you're ready to unwrap them.

Cold Storage

The chilled storage space is perfect for preserving the freshness of your food deliveries until you're ready to savor them.



EV Chargers

Support a greener planet with the readily available electric vehicle charging stations.

Bike Storage

Enjoy the peace of mind with our designated bike storage, keeping your wheels safe and sound.

LEISURE

Bike Repair Room

Keep your bike in top form with the fully equipped bike repair room, a handy resource for all cycling enthusiasts.

Indoor Kids Play Room

Rain or shine, the indoor playroom is a safe place of fun for the young and young at heart.

Outdoor Kids Play Area

Little ones can let their imagination run wild in the safe and vibrant outdoor play area.



Games Room and Pool Table

Engage in friendly competition or a casual game in the versatile games room.

Putting Greens

Refine your golf skills on the pristine putting greens.

FURRY FRIENDS

Pet Spa

Treat your beloved pets to a day of indulgence in our pet spa, where grooming meets pampering.

Off Leash Dog Park

Unleash fun in the dog park, a secure spot for your furry friends to play and run freely.



WELL-BEING

Fitness Centre

Boost your health and happiness in the state-of-the-art fitness center, your haven for physical wellbeing.

Yoga and Pilates Studio

Embrace serenity and strength in the peaceful yoga and pilates studio, designed to enhance your mind-body connection.

Steam Room

Let the soothing steam envelop you in the steam room, the perfect escape for relaxation and renewal.



Sauna

Immerse yourself in the gentle warmth of the infrared sauna, where relaxation meets detoxification.

Cold Plunge

Invigorate your senses with a refreshing dip in the cold plunge pool, an exhilarating end to any wellness routine.

Hot Tub

Sink into the bliss of the hot tub, where warm waters whisk away the stresses of the day.

Guest Suite

Invite your guests to stay in comfort with access to the stylishly appointed guest suite.

GATHER

Business Centre

Productivity meets convenience in the fully equipped business center, a space that works as hard as you do.

Dining Room

Gather around the table in the communal dining room, the perfect backdrop for memorable meals.

Party Room and Lounge

Celebrate life's moments in the adaptable party room and lounge, a canvas for your events and relaxation.



Outdoor Kitchen

Unleash your culinary creativity in the outdoor kitchen, a delightful way to dine al fresco.

Outdoor Dining Areas

Savor dining under the open sky in the inviting outdoor dining spaces.

Community Gardens

Cultivate joy and community in the shared gardens, a green oasis in your urban life.

Outdoor Lounge with Fireplace

Cozy up under the stars in the outdoor lounge, complete with a crackling fireplace for magical evenings.

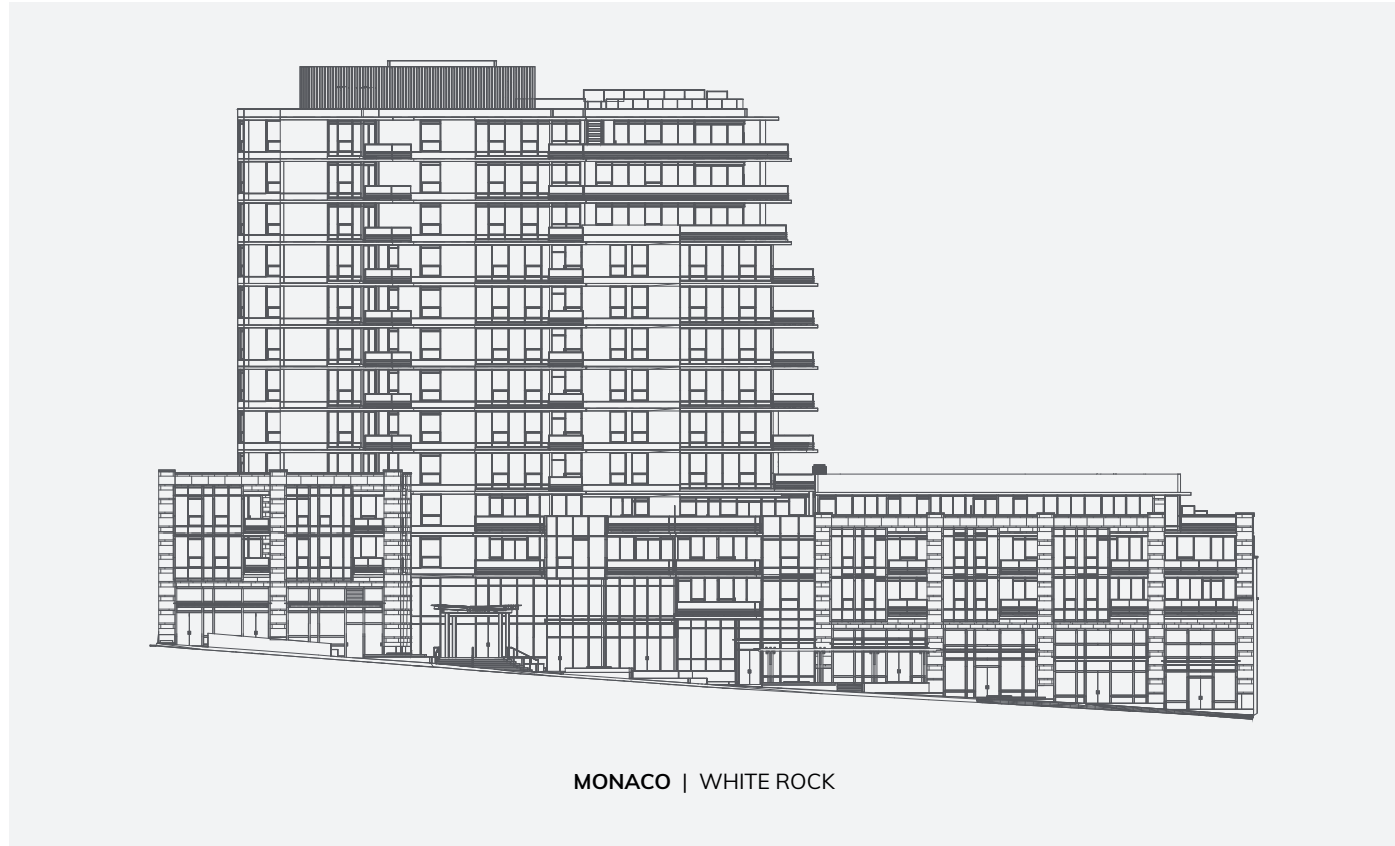


Solterra Development

BUILDING EXCELLENCE

At Solterra, we are committed to creating exceptional new homes and communities in British Columbia. All of our new homes offer a solid investment in the ever-changing real estate market — homes with well-planned designs, solid construction, quality finishes, and superior craftsmanship. From inception, our new homes are designed and built with the desires and requirements of our clients in mind.

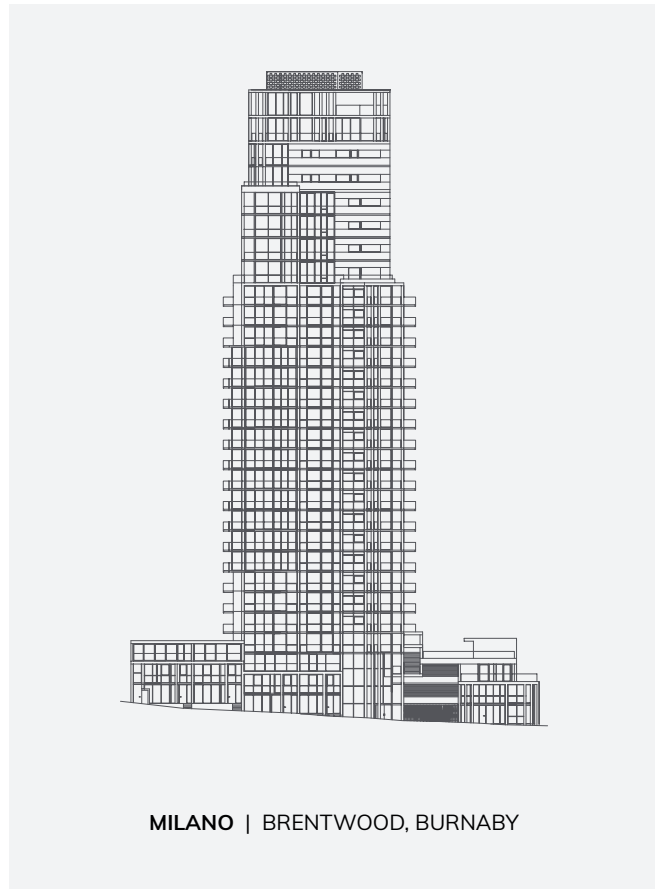
Over the past 20 years, the team at Solterra has been involved with the development of many award-winning multi-residential communities throughout the Lower Mainland. We understand the importance of a home and pride ourselves on receiving over 75 prestigious new home development awards. Every home is designed to create lasting value.



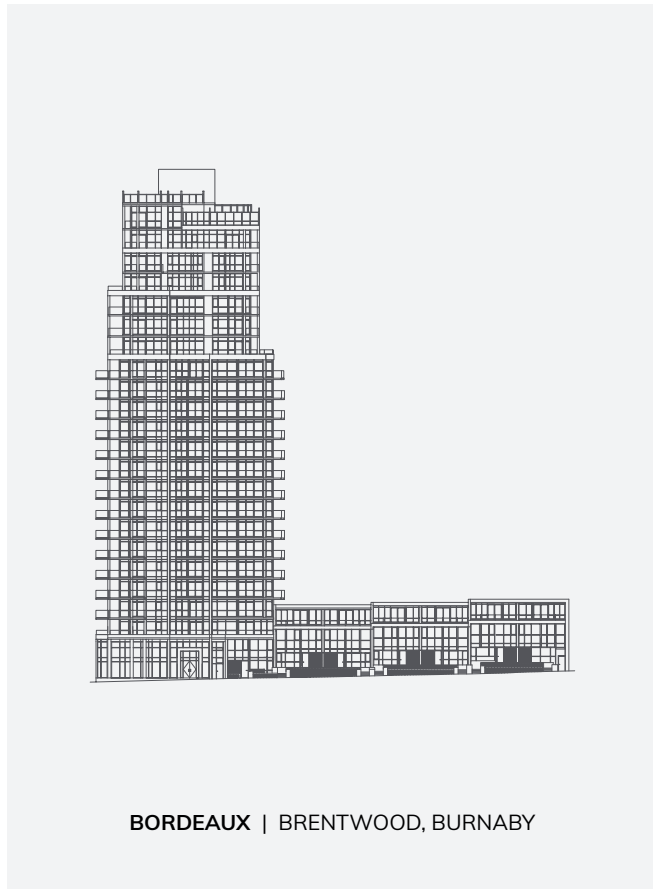
MONACO | WHITE ROCK



VITA AND DOLCE AT SYMPHONY PLACE | DOWNTOWN VANCOUVER



MILANO | BRENTWOOD, BURNABY



BORDEAUX | BRENTWOOD, BURNABY

PRESENTATION CENTRE | OPEN BY APPOINTMENT
1545 Johnston Road, White Rock, BC V4B 3Z6

604.531.8238 VIVERE BY SOLTERRA.CA

Sasha
Davis

SALES MANAGER | OAKWYN REALTY LTD.

c. 604.290.8928
e. sashad@viverebysolterra.ca

Sammy
Tseng

SALES SPECIALIST | OAKWYN REALTY LTD.

c. 778.321.5838
e. sammyt@viverebysolterra.ca

vive
re