

Multiply Your
Expectations



ADDITION

Moments + Memories

Friends + Neighbours

Work + Play

Exceptional + Responsible


Willoughby + Willowbrook

*This is your moment.
To move up in life.
To finally have more.*

+ So Much
Space
For Life

A Higher Level of Townhome Nestled Between Willoughby + Willowbrook

Perfectly situated between Willoughby + Willowbrook, Addition is your chance to finally have more. More room to live and play. More intelligent design. More rooftop views. From the trusted team at Redekop Ferrario Properties, this rare collection of townhomes invites you to seize your moment.



R A New Living
Experience
from Redekop
Ferrario Properties

Rooftop terrace
Gas barbecue hookup
Heat pump with AC
Two-car garage
EV outlet rough-in



All Standard

Design That *Welcomes You Home*



Outside, clean lines and layered textures convey an upscale simplicity, topped by a private rooftop terrace for every home. A spacious two-car garage with a roughed in EV charging outlet and a mudroom entrance makes arriving home feel effortless.

Minimalism + Warmth



A Rooftop Retreat for Every Home

Each home has a large rooftop deck equipped with a gas connection for barbecuing. Whether you're laughing with friends around the fire pit or enjoying a quiet glass of wine, soak in views of the Langley Basin, the Fraser Valley and Mount Baker in your own personal retreat.



Quartz countertops

Shiplap detailing

Walk-in shower

Built-in closet shelving

Premium features



All Standard

More Space for Connection

Inside, open living spaces, generous bedrooms and oversized windows create a bright, expansive feel. At Addition, premium finishes come standard, from wide plank flooring and solid shelving to plush carpets that feel cozy underfoot. A central air conditioning and heat pump system keeps you comfortable year round.



In the kitchen, natural materials and shiplap detailing bring warmth to the sleek custom cabinetry and seamless quartz countertop and backsplash. Chat with guests as you cook—superior appliances, soft-close doors and drawers, abundant storage and other upscale touches streamline your meal prep.



Premium Features
—All Standard





An Everyday *Escape*

The bathrooms are designed to create moments of calm in your daily routine. The spa-like ensuite features a walk-in shower with a handheld wand, as well as double sinks, each with its own mirrored medicine cabinet—so everyone has their own space. In the main bathroom, a soaker tub offers the perfect way to end the day.





Open-concept living spaces with 9' ceilings on main floor.



Roller shades throughout homes with blackout shades in each bedroom.



All homes fitted with a heat pump & air conditioning unit for effortless comfort.



Wide plank laminate flooring on main level, plush carpet on stairways and upper level rooms.



Double vanity with undermount sinks and polished quartz countertops and backsplash.



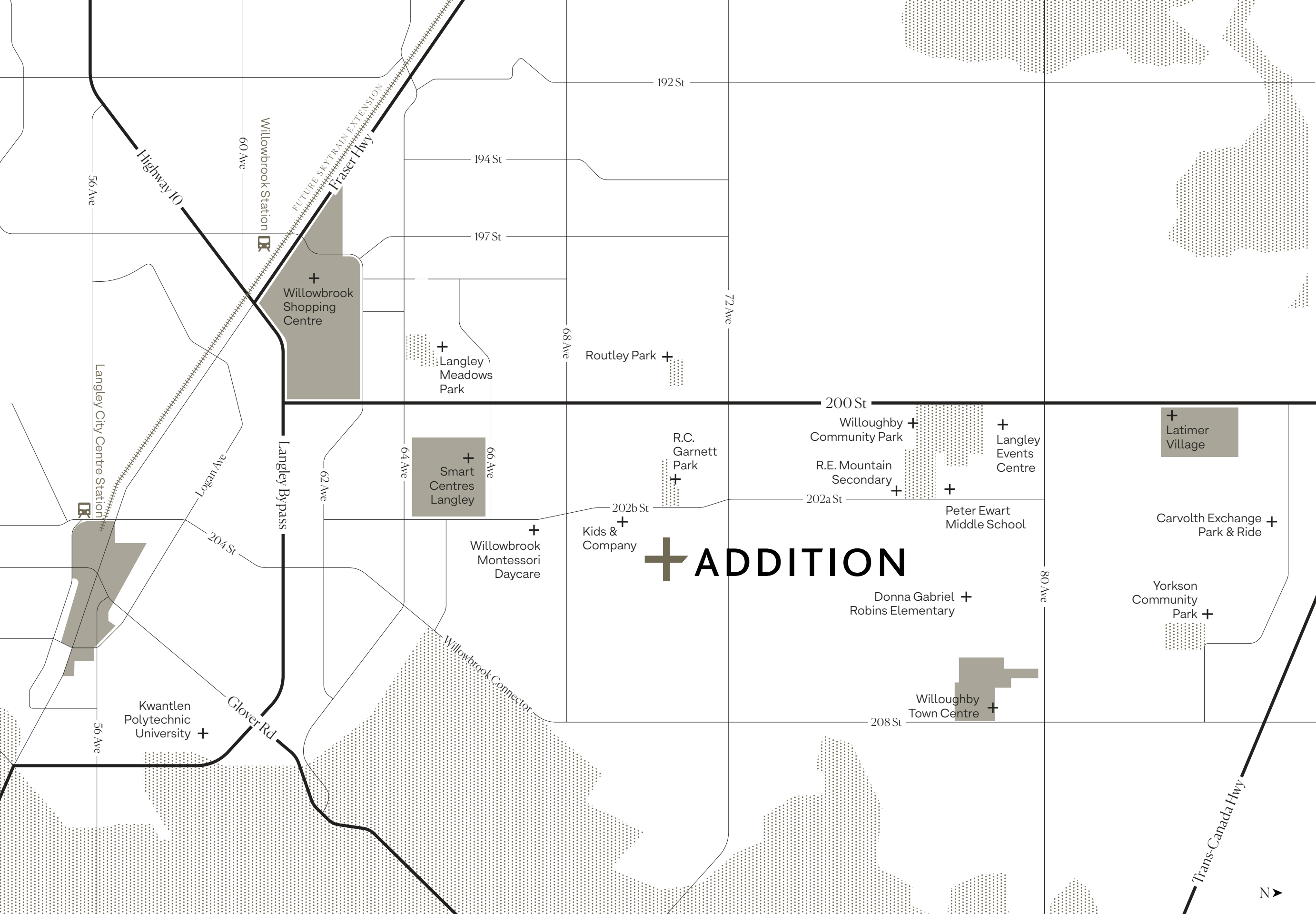
+ Connected location
True neighbourhood feel

All Standard

More of Everything *You Need*

Nestled between Willowbrook and Willoughby, Addition offers the best of both. Streamline your commute with easy highway access, as well as the future Willowbrook SkyTrain Station only seven minutes away. Spend days off shopping or exploring local cafés, restaurants and craft breweries, with Willoughby Town Centre, Willowbrook Shopping Centre and Walnut Grove all close at hand.





More Connected. More Walkable.

- DRIVE TIMES
- Vancouver
40 mins
 - White Rock
26 mins
 - Coquitlam
25 mins
 - Maple Ridge
20 mins





Convenience, Squared

Enhancing its connected location, Addition has a true neighbourhood feel. Daily conveniences, including abundant parks, schools, daycares and sports fields are within walking distance, while an outdoor play area and integrated paths create natural opportunities to connect with neighbours.



More *Experience* Behind Every Build

A highly respected development company with deep roots in the Lower Mainland, Redekop Ferrario Properties is known for its experienced team and smart, fiscally responsible approach. Addition epitomizes all that RFP stands for: high-quality homes that enhance their community, built with both integrity and care.



Proven + Trusted



Redekop Ferrario Properties is a new and progressive development company that combines the enthusiasm of a young, proven entrepreneur with the experience of a renowned real estate/construction-based businessman. Through the shared expertise of the directors, as well as the team of skilled professionals they have in place, Redekop Ferrario Properties possesses the ability to deliver high-quality homes that are designed to suit and enhance their community, while delivering these homes in an efficient and timely manner.

RF PROPERTIES
REDEKOP | FERRARIO



A moment
+ of *truth*
and clarity.

An honest vision of homeownership
that's both exceptional and responsible,
from a group that has been building
homes here for a generation.



The developer reserves the right to make modifications and changes to the building design, elevations, dimensions, specifications, features and prices, without prior notification. Decks, patios, stairs, and windows may vary based on site conditions. All sizes and dimensions are approximate and based on architectural measurements. Reverse and/or mirror plans occur throughout the development. Please see disclosure for specific offering details once available. This is not an offering for sale. E.&O.E.

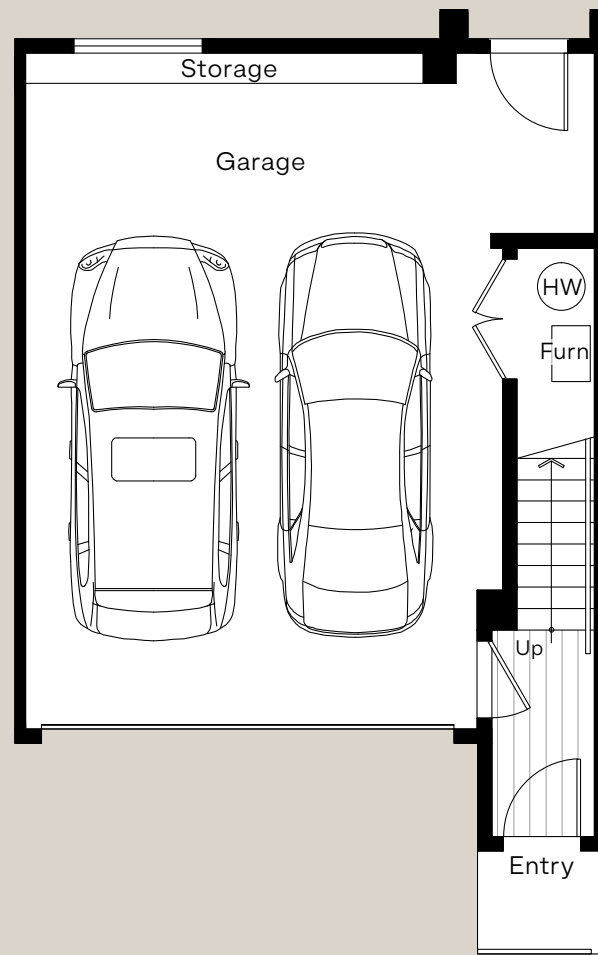


A Plan

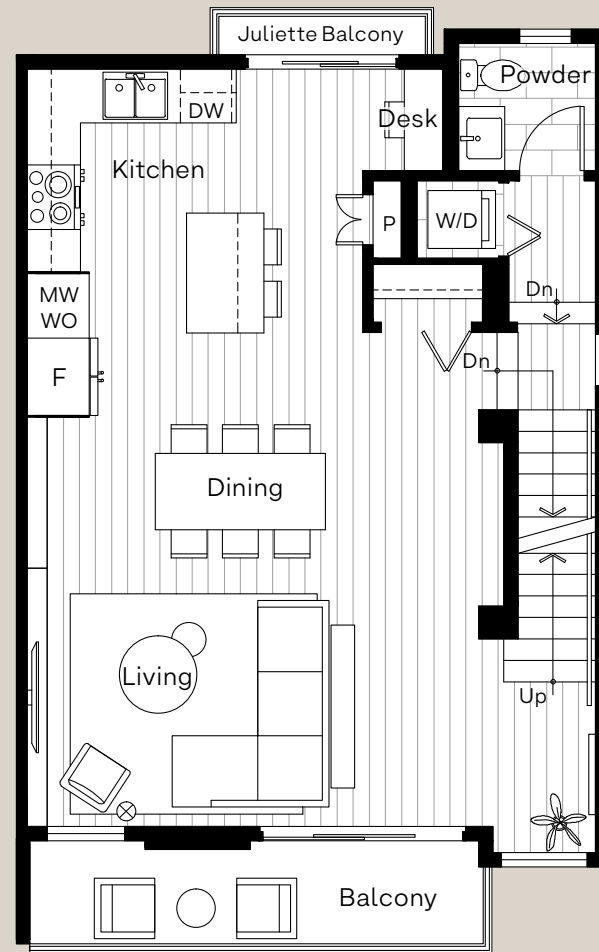
3 Bedroom + 2.5 Bathroom

TOTAL: 1,506 SQ FT

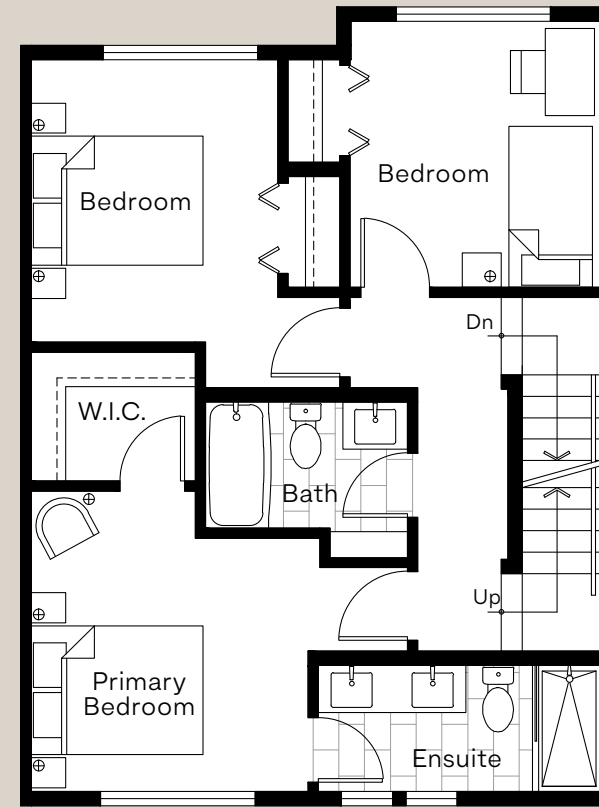
ROOFTOP: 670 SQ FT



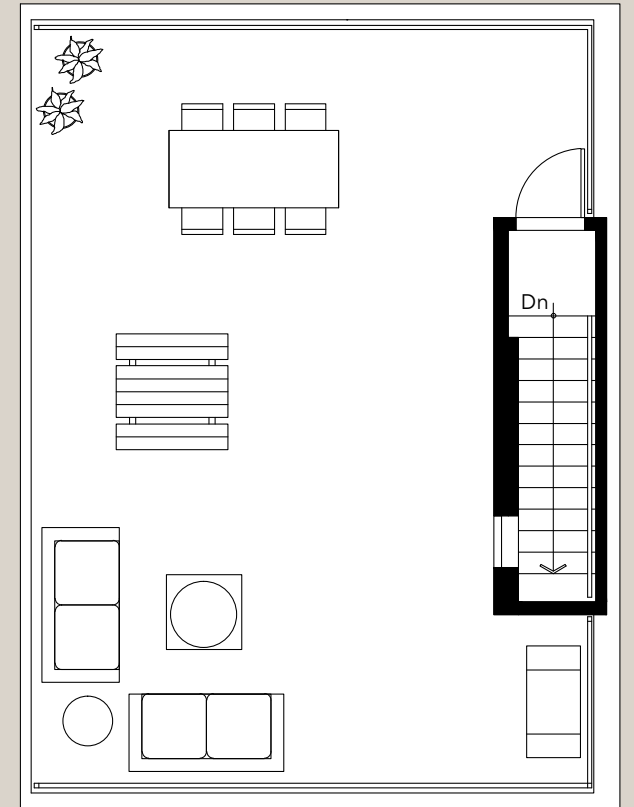
Lower



Main



Upper



Roof Deck

B1 Plan

3 Bedroom + 2.5 Bathroom

TOTAL: 1,417 SQ FT

ROOFTOP: 600 SQ FT

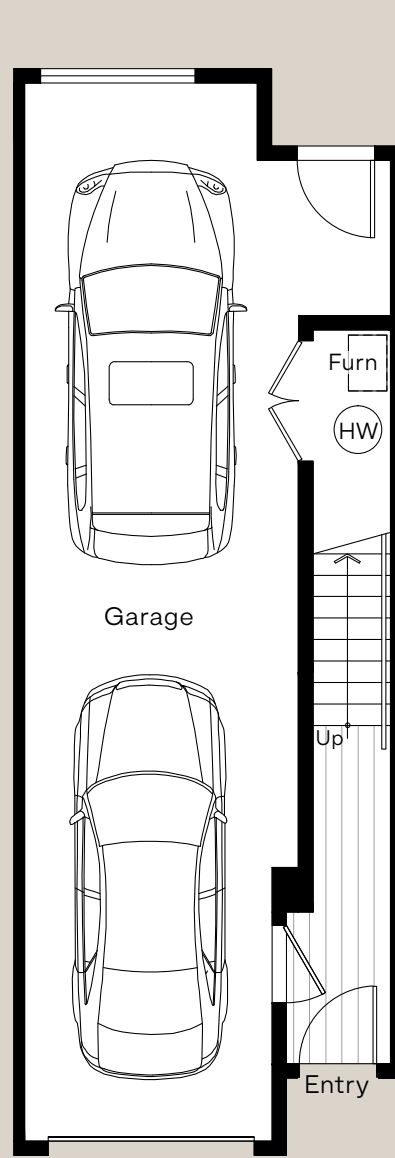


B2 Plan

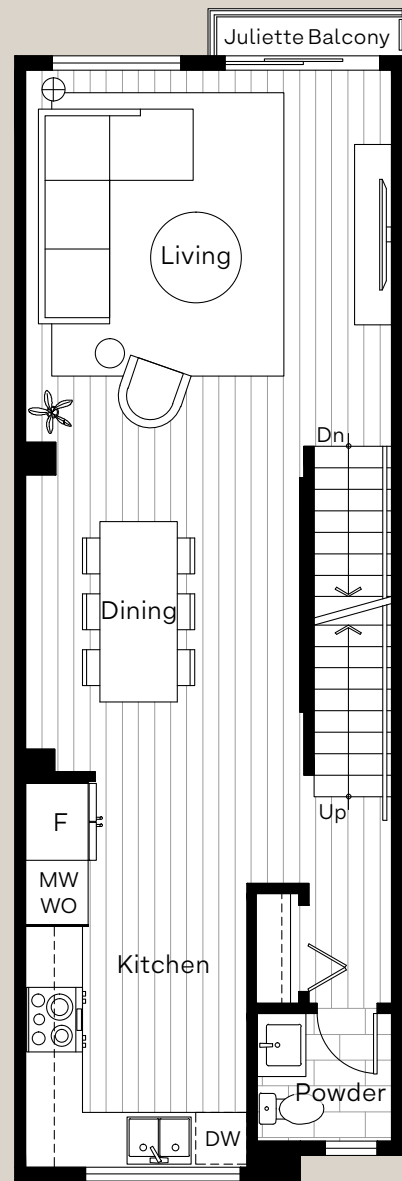
3 Bedroom + 2.5 Bathroom

TOTAL: 1,413 SQ FT

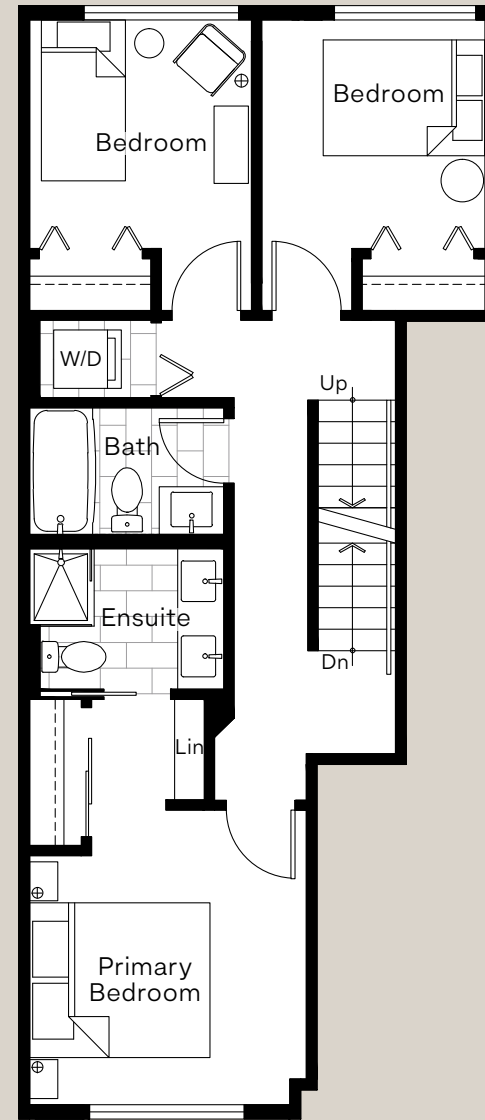
ROOFTOP: 600 SQ FT



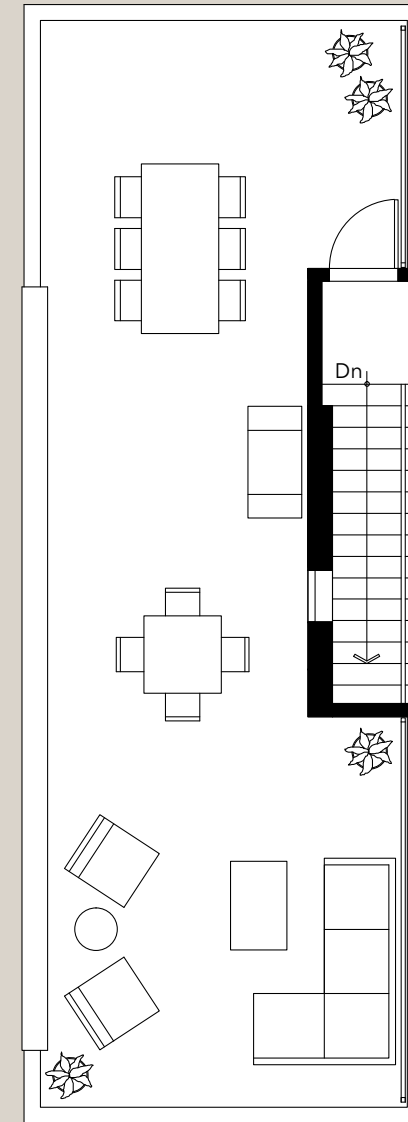
Lower



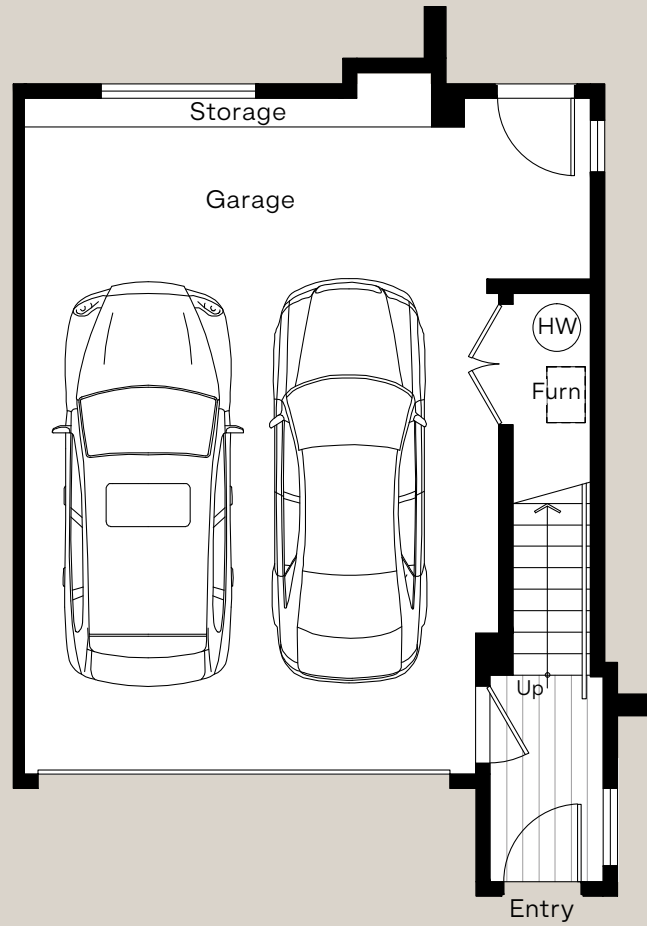
Main



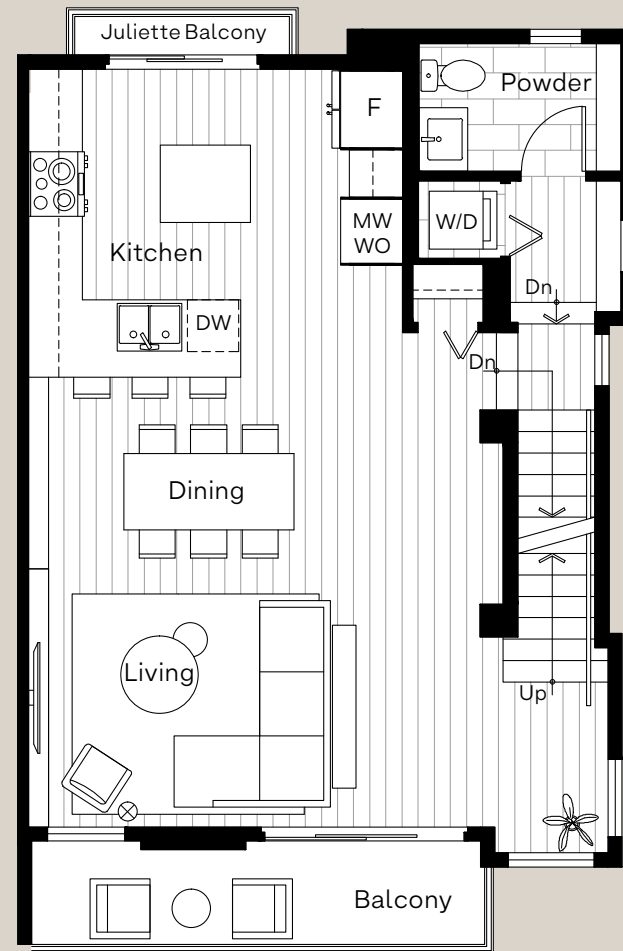
Upper



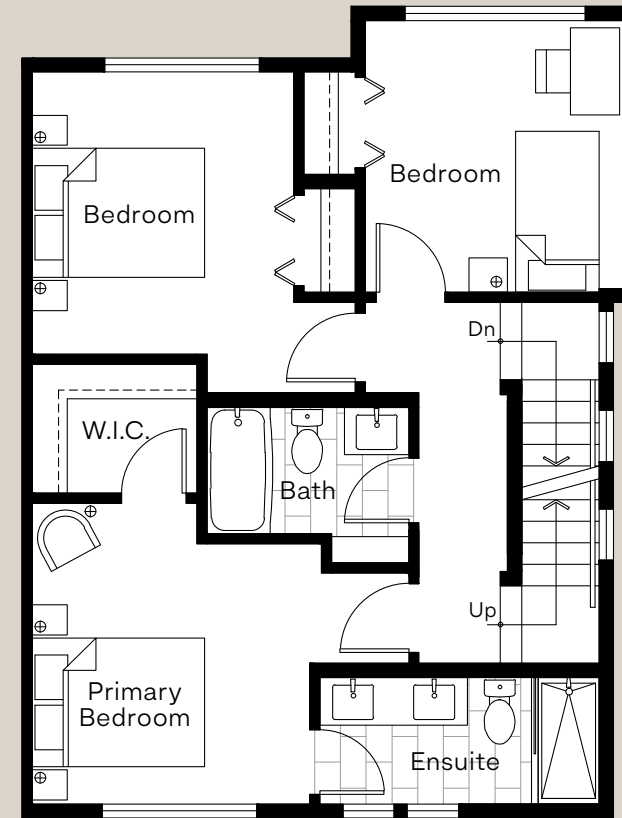
Roof Deck



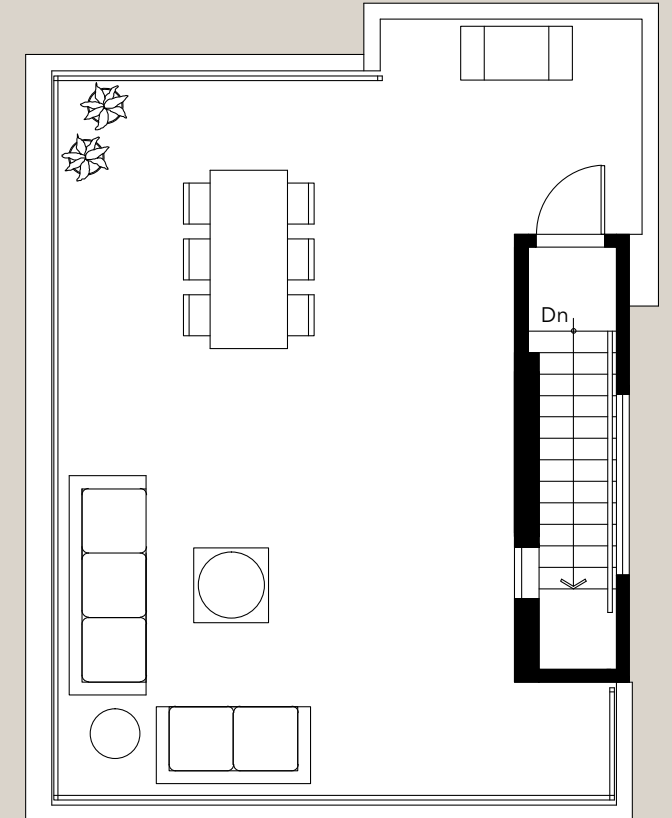
Lower



Main



Upper



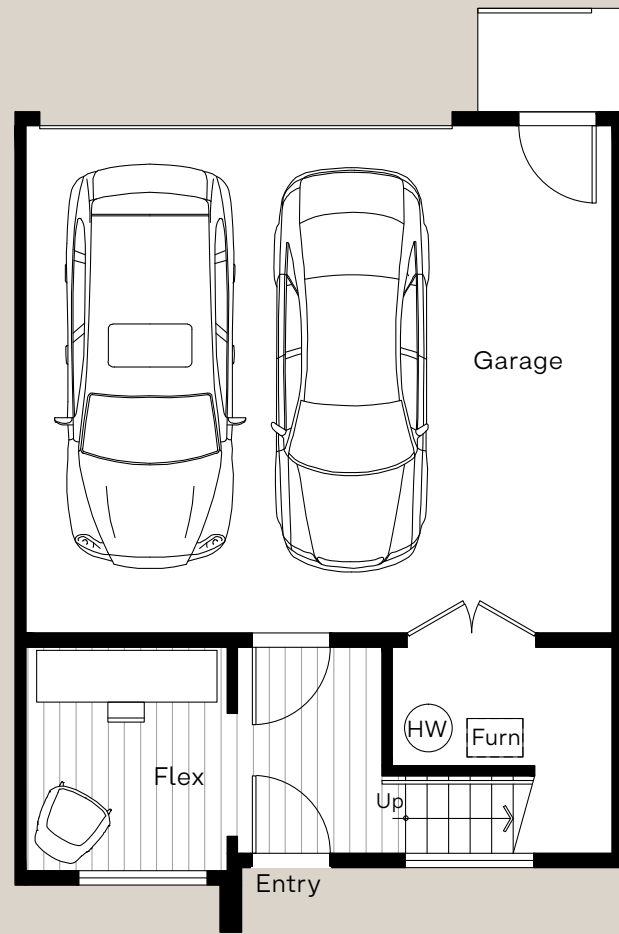
Roof Deck

D Plan

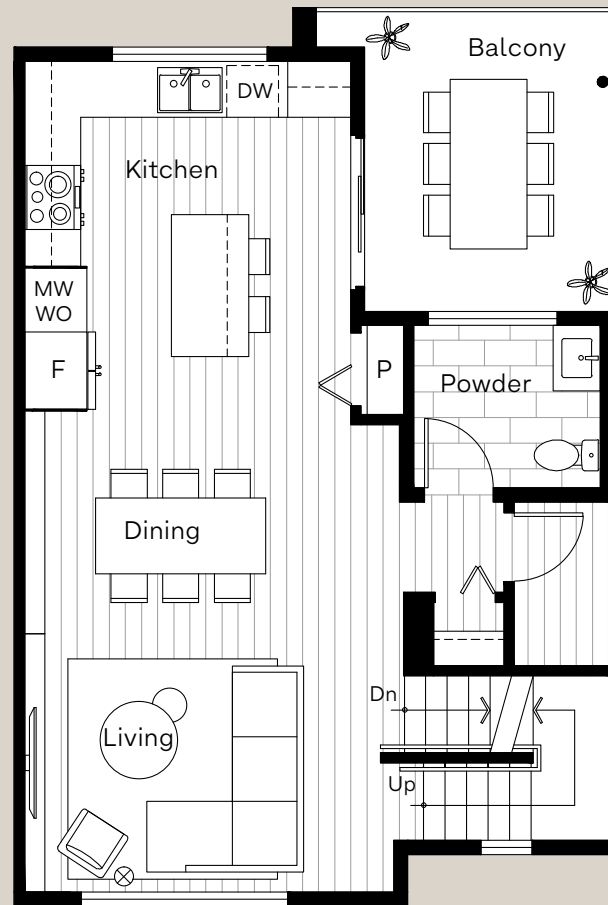
3 Bedroom + Flex + 2.5 Bathroom

TOTAL: 1,645 SQ FT

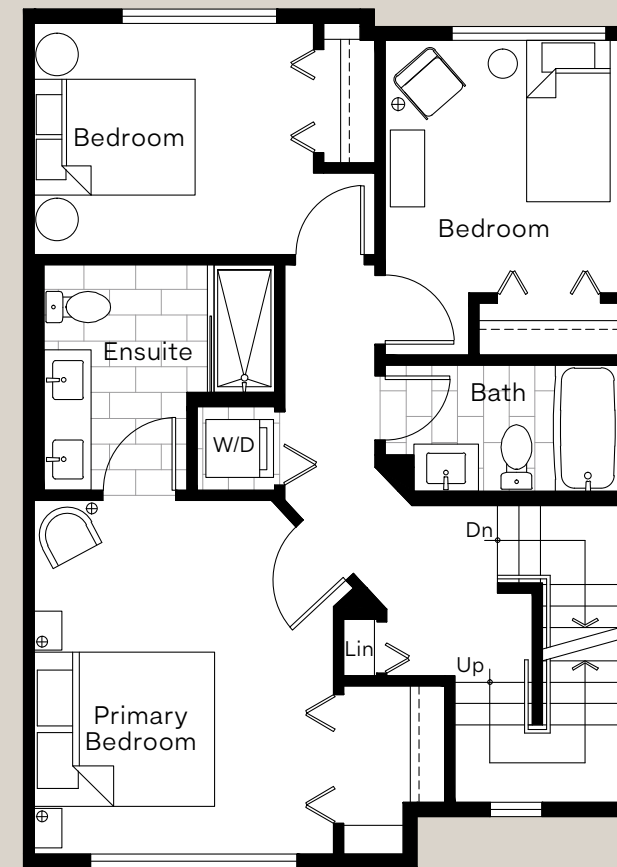
ROOFTOP: 675 SQ FT



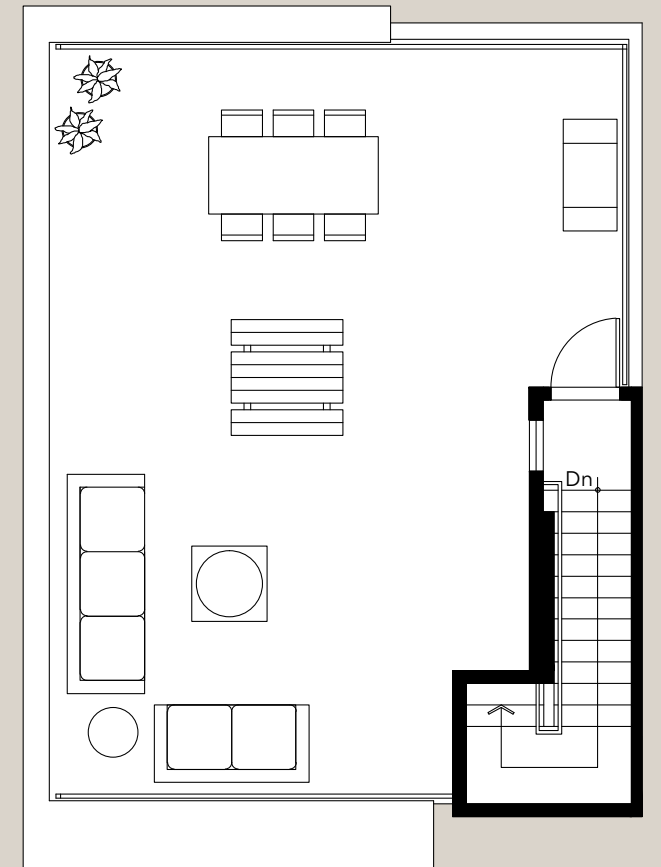
Lower



Main



Upper



Roof Deck

Elevated Exteriors

- + A higher level of townhome nestled between Willoughby + Willowbrook
- + Durable Hardie siding with metal cladding accents
- + Spacious private rooftop terrace for every home
- + Finished gas barbecue connection on all rooftop terraces and select main floor decks
- + Fully fenced yards with lush landscaping
- + Convenient front, garage and rooftop hose bibs
- + Roughed-in EV charging outlet

Premium Interiors

- + Choice of two curated designer colour schemes
- + Open-concept living spaces with 9' ceilings on main floor
- + Wide plank laminate flooring on main level, plush carpet on stairways and upper level
- + Matte black plumbing fixtures, accessories and hardware throughout
- + Roller shades throughout homes with blackout shades in each bedroom
- + Heat pump with air conditioning unit
- + Hardwired smoke and carbon monoxide detectors
- + Fire sprinklers

Gourmet Kitchens

- + Stainless steel appliances by Samsung, including:
 - 30" Gas range cooktop
 - 36" French door refrigerator with pull-out freezer drawer
 - 30" Flush mounted wall oven
 - Dishwasher with auto-open feature
 - Built-in microwave
- + Stainless steel deep double basin sink
- + Custom shaker-style cabinets with soft-close doors and drawers
- + Shiplap detailing island/peninsula cabinets
- + Seamless polished quartz countertop with quartz slab backsplash

Peaceful Ensuites + Bathrooms

- + Polished quartz countertop and backsplash
- + Spa-like walk-in shower with handheld wand
- + Mirrored medicine cabinets in the ensuite
- + Double vanity with undermount sinks
- + Main bathroom soaker tub

A Trusted Name

- + A highly respected development company with deep roots in the Lower Mainland, Redekop Ferrario Properties is known for high quality homes that enhance their community, built with both integrity and care
- + Comprehensive warranty protection by Travelers Insurance Company of Canada, including coverage for:
 - 2 years on materials and labour
 - 5 years on the building envelope
 - 10 years on the structure
- + Built to Step 2 per the BC Energy Step Code

Willoughby + Willowbrook

- + Future Willowbrook Skytrain Station only seven minutes away
- + Easy commuter access to Highway 1
- + Three outdoor amenity spaces featuring a children's playground and integrated paths connecting the community
- + Abundant parks, schools, daycares and sports fields all within walking distance

All Standard

- + Heat pump with air conditioning unit
- + Navien high-efficiency tankless hot water system
- + Samsung front-load washer and dryer
- + Finished gas barbecue connections
- + Solid built-in closet organizers
- + Roughed-in EV charging outlet
- + Home security system roughed-in

Custom Options

- + Epoxy garage floor
- + Laminate flooring on stairways and upper level



A New Living
Experience
from Redekop
Ferrario Properties

Marketing & Sales by

momentum

The developer reserves the right to make modifications and changes to the building design, elevations, dimensions, specifications, features and prices, without prior notification. Decks, patios, stairs, and windows may vary based on site conditions. All sizes and dimensions are approximate and based on architectural measurements. Reverse and/or mirror plans occur throughout the development. Please see disclosure for specific offering details once available. This is not an offering for sale. E.&O.E.